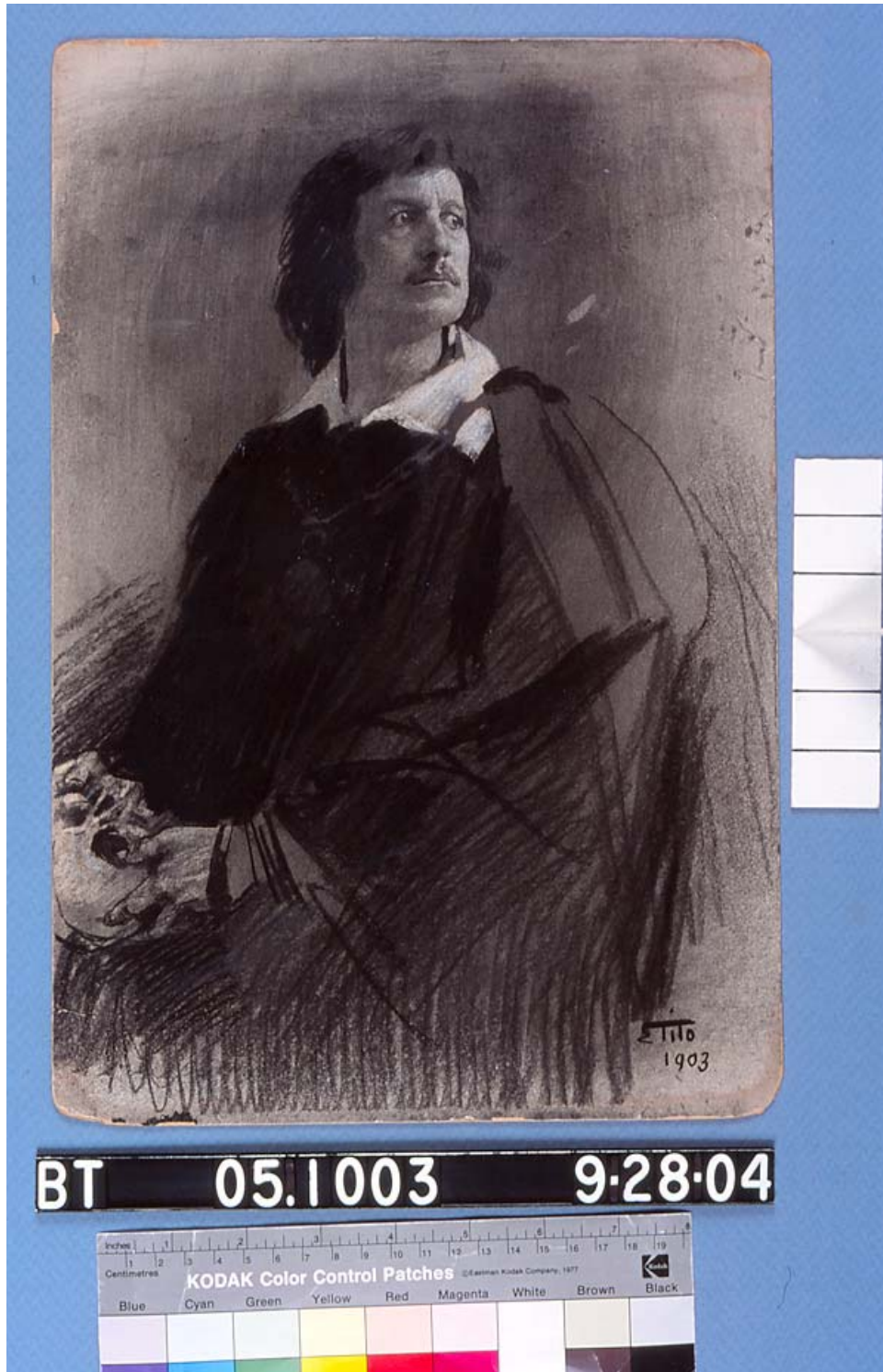


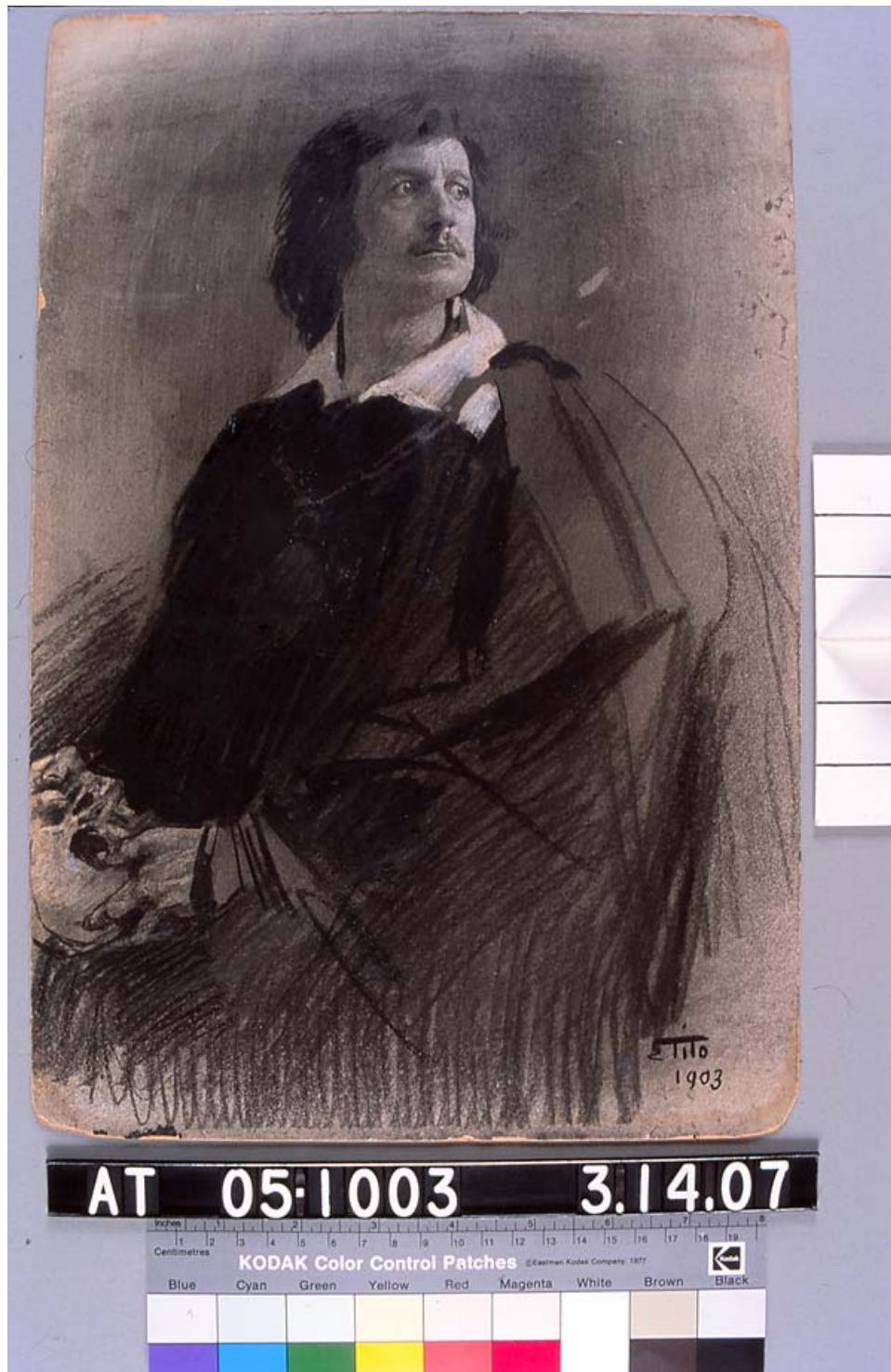
Paper Treatments - Mending Broken Boards - Part I

Treatment of MC# 05-1003 - Gustavo Salvini as Hamlet:

The board on which this charcoal and pastel drawing was mounted was broken or split at a point along the lower left edge near the corner. (See detail photo) The board was repaired and slight inpainting was done on the repair paper to reduce the visual disturbance from the split.



Before treatment (board split on lower left side near corner)



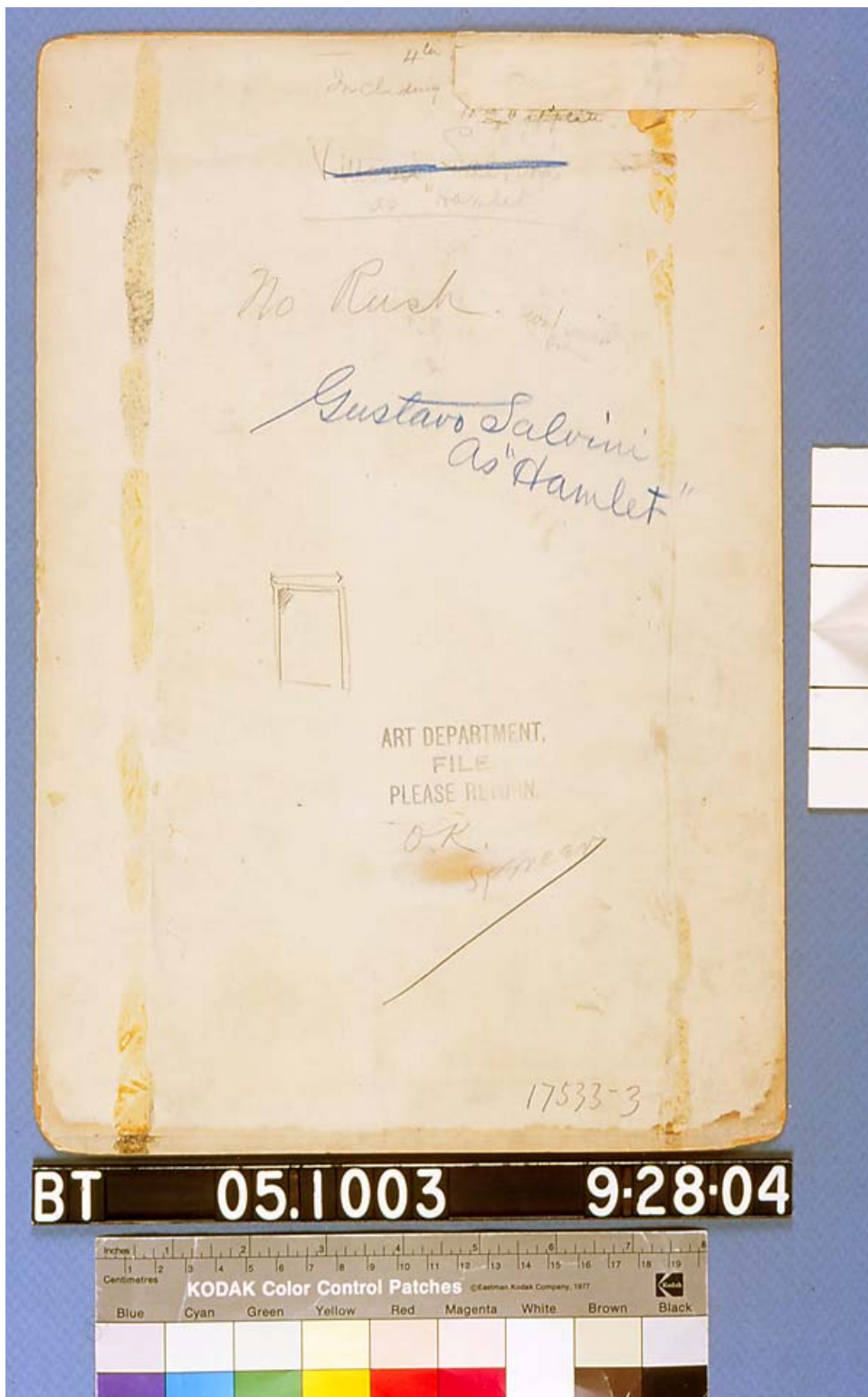
After treatment - showing board repaired and in-painted



Before Treatment (Detail - split just above corner on left)



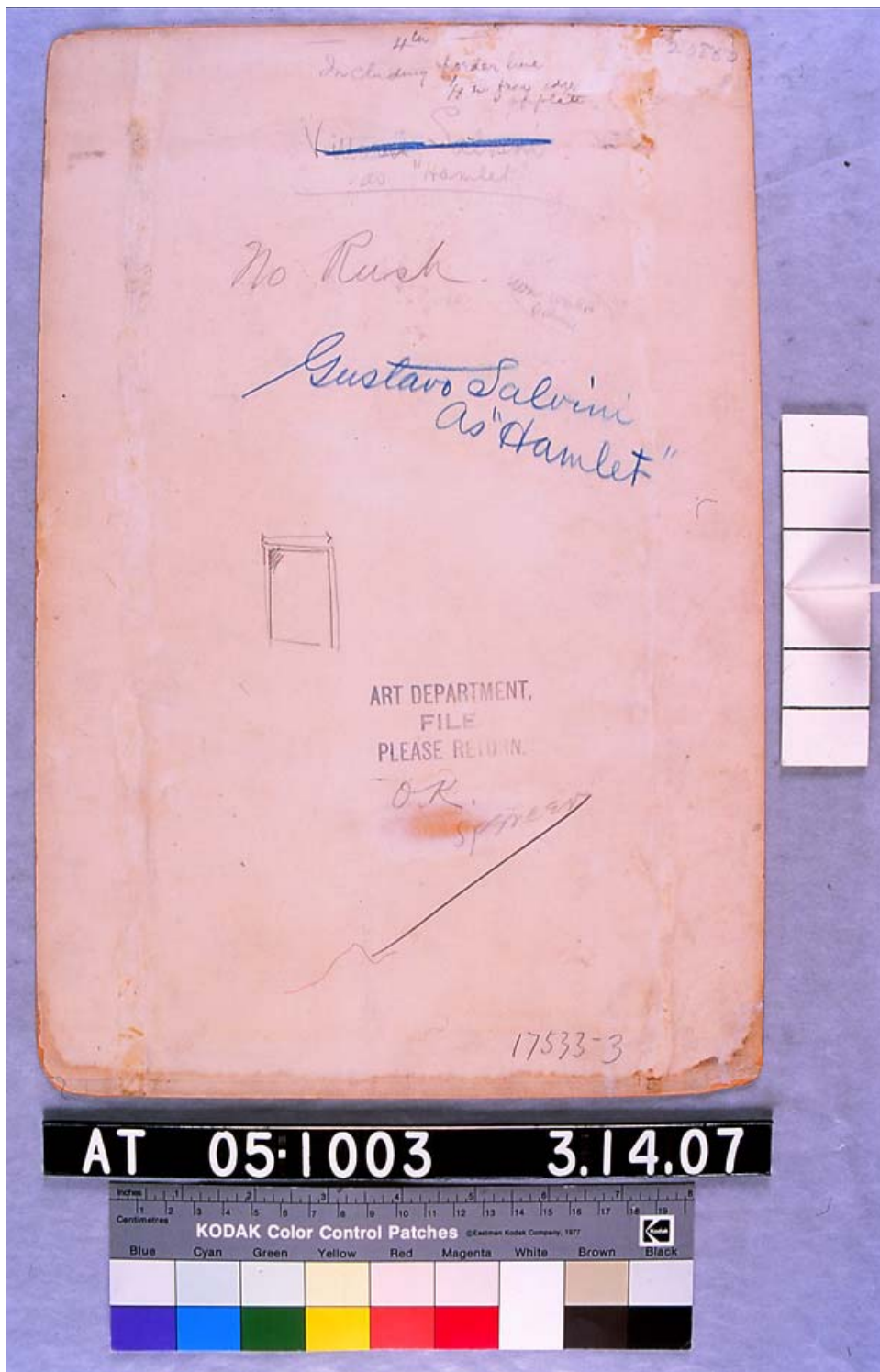
After Treatment (split repaired and in-painted)



BT 05.1003 9-28-04



Before Treatment (Verso) - Note label in top right corner over text



After Treatment (Verso) - showing label removed and text visible

[Click here](#) to return to main Paper Treatment page.